

# Franklin/Hampshire

## Economic Data

**Percentage Make-Up of Total Labor Market by Negative or Non-Negative\* Growth and Make-Up of Total Labor Market by Non-Negative Growth Industries (Jobs Created '07-'08), Q3**

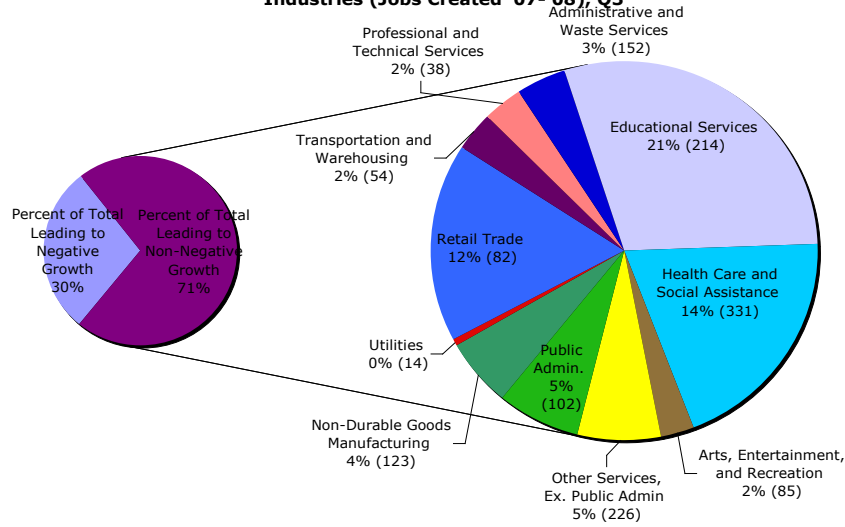


Figure 1<sup>1</sup>

\*Please note that Non-Negative refers to industries with both positive growth and zero growth (stable industries though non necessarily growing)

Based on the Third Quarter data in 2007 and 2008 it is evident that of all non-negative growth over the period the largest percentage of Franklin/Hampshire's working population is employed in Health Care and Social Assistance, Educational Services, Retail Trade, Public Administration, Other Services Excluding Public Administration, Administrative and Waste Services, and Non-Durable Goods Manufacturing: all other non-negative growth industries represent two percent or less of the total working population.

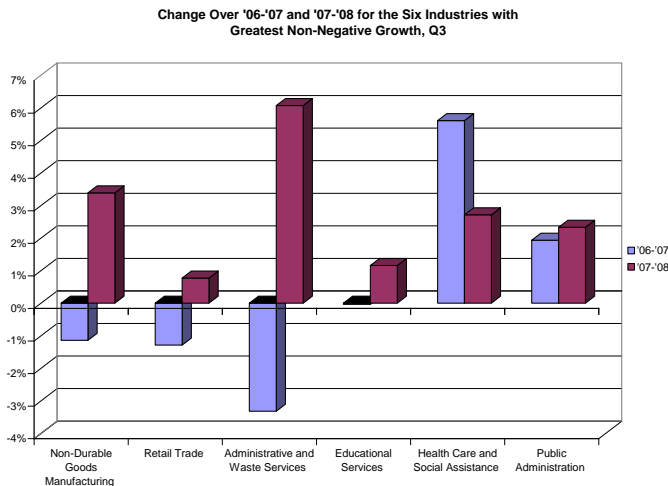


Figure 2<sup>3</sup>

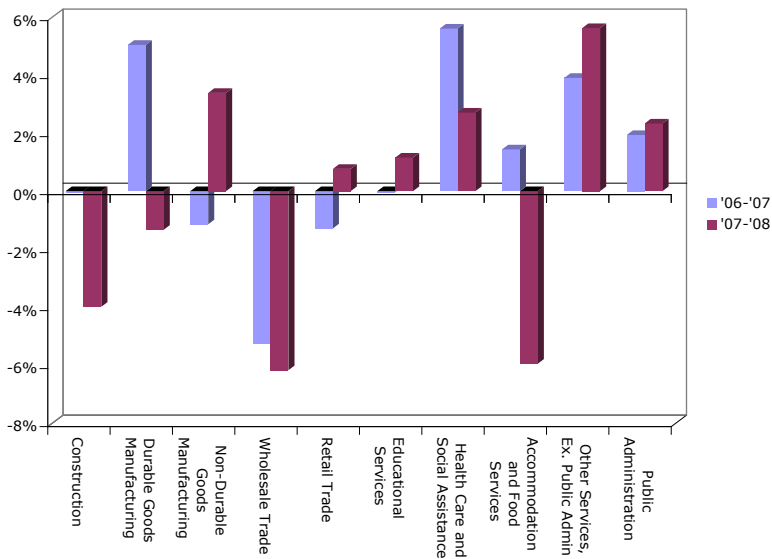
Over Q3 '07-'08 there was a net gain of 303 jobs in Franklin/Hampshire:<sup>4</sup> the industries displayed in Figure 2 and Table 1 contributed a total of 1,004 jobs during the period. These six industries are the highest growing industries.

Industry*	Growth Over Q3'07-'08	Working Population Q3 2008
Health Care and Social Assistance	3%	14%
Ed. Services	1%	21%
Retail Trade	1%	12%
Public Admin.	2%	5%
Admin. and Waste	6%	3%
Non-Durable Goods Manufacturing	3%	4%

Table 1<sup>2</sup>

\*Please note, Other Services, although one of the larger industries, was excluded because of the non-descript nature of the category in terms of sector targeting.

**Change Over '06-'07 and '07-'08 for the Four Industries with Greatest Non-Negative Growth, Q3**



Industry in Decline Over Both Periods	Over Q3 '06-'07 '07-'08	Working Population Q3 2008
Construction	0% -4%	4%
Wholesale Trade	-5% -6%	3%

Table 2<sup>5</sup>

Figure 3<sup>6</sup> (Please see Appendix C for Statewide Comparison)

Based on the Third Quarter data over '06-'07 and '07-'08 the largest declines have been in Construction and Wholesale Trade.

## **Franklin/Hampshire Regional Workforce Board Information**

The Franklin/Hampshire Regional Workforce Investment Board is receiving \$1,790,367 from ARRA. The money is to be spent as follows:<sup>7</sup>

- \$91,682 Wagner-Peyser
  - o With the ARRA funding Franklin/Hampshire expects to serve 1,180 additional job seekers (above the 6,000 already served)<sup>8</sup>
  - o With the ARRA funding Franklin/Hampshire expects to serve 100 additional employers (above the 1,872 already served)<sup>9</sup>
- \$200,734 WIA Adult
  - o With the ARRA funding Franklin/Hampshire expects to serve 51 additional adults.
    - The funding will allow access to training and supportive services for adults-including core, intensive and employment aid through the One-Stop Career Centers<sup>10</sup>
    - Training options will center around Individual Training Accounts, group training in targeted industries (i.e. healthcare, “green jobs”, precision machining, occupational trades)- which will include, Occupational Skills Training, Adult Basic Education, and/or ESOL<sup>11</sup>
      - Franklin/Hampshire is exploring specified programs such as:
        - o Home Health Aide and Certified Nurse Aide training
        - o A pre-college, short-term program in Weatherization (complementing a certificate and associate program already offered at GCC)

- Building Maintenance Technician
  - Franklin/Hampshire also hopes to work with local organizations to increase enrollment of targeted populations in tracks to increase skills, to develop new certificate programs, to integrate community college programs with workforce preparation, to develop multi-workshops for prospective workers in Educational Services, to increase apprenticeship programs, to develop a customized CNC Machine Operator training program (incumbent/prospective) with MassMEP, and to explore On-the-Job-Training possibilities
- \$448,239 WIA Dislocated Worker
  - With the ARRA funding Franklin/Hampshire expects to serve 174 additional dislocated workers<sup>12</sup>
    - Funding will provide the same opportunities for dislocated workers (training and supportive services) as for adults (see above)
- \$157,324 Re-Employment Services
  - With the ARRA funding Franklin/Hampshire expects to serve 1,914 UI claimants<sup>13</sup>
    - Funding will provide UI claimants to receive training and supportive services after a Career Center Seminar and Triage to determine present marketable skills, goals and develop a Career Action Plan
- \$892,388 WIA Youth
  - With the ARRA funding Franklin/Hampshire expects to serve 300 low-income, at-risk youth (ages 14-24) in the summer works program, including a 30% minimum percentage of out-of-school youth.<sup>14</sup> The large number of youth served is a great increase from the past when funds allowed only approximately 30-35 youth to be placed each summer.<sup>15</sup>
  - The summer program will be coupled with a year-round follow-up to aid youth in achieving educational and employment goals

Franklin/Hampshire hired additional staff to facilitate the increased number of those being served. Franklin/Hampshire hired 2 additional WIA staff, 1 WIA workshop coordinator, 3 job specialists, 1 clerk, and has contracted with a clinical specialist.<sup>16</sup>

With the proposed training plan Franklin/Hampshire will offer ITAs, Group Training, Customized Training and ABE/ESOL.<sup>17</sup> The region is exploring On-the-Job Training as an option, and will not be offering Skill Upgrading. Also, Franklin/Hampshire will provide Support Services, but will not provide Needs-Related Payments as the region feels the services offered should be adequate to meet needs.<sup>18</sup>

---

<sup>1</sup> Employment and Wages (ES-202).” The Executive Office of Labor and Workforce Development. Third Quarter data 2006, 2007, 2008 for Franklin/Hampshire in all types of ownership by Industry Totals by 2-digit NAICS Code. [http://lmi2.detma.org/lmi/lmi\\_es\\_a.asp](http://lmi2.detma.org/lmi/lmi_es_a.asp)

<sup>2</sup> Ibid.

<sup>3</sup> Ibid.

<sup>4</sup> Ibid.

<sup>5</sup> Ibid.

<sup>6</sup> Ibid.

<sup>7</sup> “Massachusetts Regional ARRA Allocations.”

[http://massworkforce.com/documents/2009\\_ARRA\\_Allocations.xls](http://massworkforce.com/documents/2009_ARRA_Allocations.xls). 15 September 2009.

<sup>8</sup> FHREB ARRA Public Notice and Executive Summary FY09-10. Page 3. <http://www.fhcc-onestop.com/reb/docs/FHREB%20ARRA%20Public%20Notice%20and%20Exectutive%20Summary%20FY09-10.pdf>. 15 September 2009.

<sup>9</sup> Ibid.

<sup>10</sup> FHREB ARRA Public Notice and Executive Summary FY09-10. Page 2. <http://www.fhcc-onestop.com/reb/docs/FHREB%20ARRA%20Public%20Notice%20and%20Exectutive%20Summary%20FY09-10.pdf>. 15 September 2009.

<sup>11</sup> Franklin Hampshire ARRA Draft Plan. Attachment H. Pages 7-8. <http://www.fhcc-onestop.com/index/franklinhampshireARRAplan.pdf>. 15 September 2009.

<sup>12</sup> FHREB ARRA Public Notice and Executive Summary FY09-10. Page 2. <http://www.fhcc-onestop.com/reb/docs/FHREB%20ARRA%20Public%20Notice%20and%20Exectutive%20Summary%20FY09-10.pdf>. 15 September 2009.

<sup>13</sup> FHREB ARRA Public Notice and Executive Summary FY09-10. Page 3. <http://www.fhcc-onestop.com/reb/docs/FHREB%20ARRA%20Public%20Notice%20and%20Exectutive%20Summary%20FY09-10.pdf>. 15 September 2009.

<sup>14</sup> Ibid.

<sup>15</sup> Gardini Cavanaugh, Susan. Introductory Letter to Secretary Bump. Franklin Hampshire ARRA Draft Plan. Page 3 of 57 in pdf. <http://www.fhcc-onestop.com/index/franklinhampshireARRAplan.pdf>. 15 September 2009.

<sup>16</sup> Franklin Hampshire ARRA Draft Plan. Attachment H. Page 6. <http://www.fhcc-onestop.com/index/franklinhampshireARRAplan.pdf>. 15 September 2009.

<sup>17</sup> Franklin Hampshire ARRA Draft Plan. Attachment H. Page 9. <http://www.fhcc-onestop.com/index/franklinhampshireARRAplan.pdf>. 15 September 2009.

<sup>18</sup> Franklin Hampshire ARRA Draft Plan. Attachment H. Page 10. <http://www.fhcc-onestop.com/index/franklinhampshireARRAplan.pdf>. 15 September 2009.

Appendix A

Third Quarter Data	Average Monthly Employment		
	2006	2007	2008
<b>Total, All Industries</b>	87,837	88,439	88,742
Agriculture, Forestry, Fishing & Hunting	862	933	913
Mining	65	60	59
Construction	3,961	3,959	3,801
Manufacturing	8,589	8,795	8,849
Durable Goods Manufacturing	4,917	5,165	5,096
Non-Durable Goods Manufacturing	3,672	3,630	3,753
Utilities	347	277	291
Wholesale Trade	3,093	2,930	2,749
Retail Trade	10,801	10,662	10,744
Transportation and Warehousing	2,013	2,122	2,176
Information	1,782	1,759	1,629
Finance and Insurance	1,920	1,884	1,842
Real Estate and Rental and Leasing	746	858	832
Professional and Technical Services	2,258	1,935	1,973
Management of Companies and Enterprises	1,186	1,095	1,069
Administrative and Waste Services	2,590	2,504	2,656
Educational Services	18,504	18,497	18,711
Health Care and Social Assistance	11,561	12,209	12,540
Arts, Entertainment, and Recreation	1,682	1,738	1,823
Accommodation and Food Services	7,716	7,827	7,361
Other Services, Ex. Public Admin	3,868	4,019	4,245
Public Administration	4,293	4,376	4,478

Data extracted from:

“Employment and Wages (ES-202).” The Executive Office of Labor and Workforce Development. Third Quarter data 2006, 2007, 2008 for Franklin/Hampshire in all types of ownership by Industry Totals by 2-digit NAICS Code. [http://lmi2.detma.org/lmi/lmi\\_es\\_a.asp](http://lmi2.detma.org/lmi/lmi_es_a.asp)

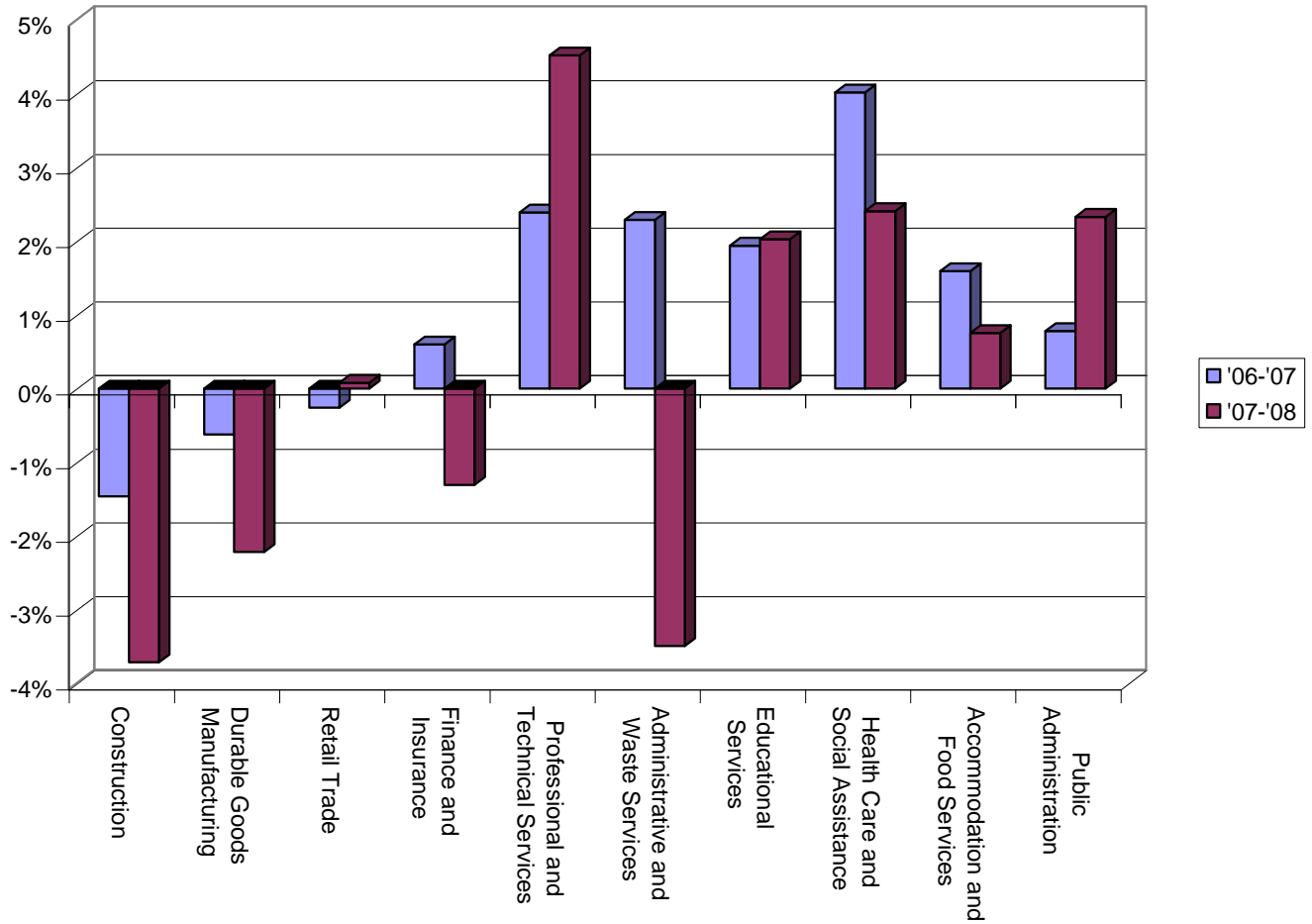
Appendix B

Statewide Third Quarter Data	Average Monthly Employment		
	2006	2007	2008
<b>Total, All Industries</b>	3,200,233	3,240,481	3,251,799
Agriculture, Forestry, Fishing & Hunting	7,749	7,543	7,462
Mining	1,842	1,596	1,339
Construction	161,049	158,696	152,804
Manufacturing	298,840	294,968	286,723
Durable Goods Manufacturing	196,222	195,003	190,681
Non-Durable Goods Manufacturing	102,618	99,964	96,042
Utilities	13,068	13,394	13,741
Wholesale Trade	137,726	139,090	137,014
Retail Trade	349,751	348,845	349,118
Transportation and Warehousing	99,927	100,754	99,560
Information	93,745	94,916	95,374
Finance and Insurance	181,868	182,958	180,567
Real Estate and Rental and Leasing	46,161	45,184	43,897
Professional and Technical Services	246,776	252,674	264,095
Management of Companies and Enterprises	61,790	61,292	61,193
Administrative and Waste Services	176,723	180,768	174,454
Educational Services	264,293	269,417	274,878
Health Care and Social Assistance	471,170	490,101	501,900
Arts, Entertainment, and Recreation	63,976	65,044	65,814
Accommodation and Food Services	264,944	269,162	271,187
Other Services, Ex. Public Admin	124,406	128,601	132,042
Public Administration	134,428	135,479	138,636

Data extracted from:

“Employment and Wages (ES-202).” The Executive Office of Labor and Workforce Development. Third Quarter data 2006, 2007, 2008 for Massachusetts in all types of ownership by Industry Totals by 2-digit NAICS Code. [http://lmi2.detma.org/lmi/lmi\\_es\\_a.asp](http://lmi2.detma.org/lmi/lmi_es_a.asp)

**Statewide Change Over '06-'07 and '07-'08 for the Ten Largest Industries, Q3**



Data Extracted From:

“Employment and Wages (ES-202).” The Executive Office of Labor and Workforce Development. Third Quarter data 2006, 2007, 2008 for Massachusetts in all types of ownership by Industry Totals by 2-digit NAICS Code. [http://lmi2.detma.org/lmi/lmi\\_es\\_a.asp](http://lmi2.detma.org/lmi/lmi_es_a.asp)