

Greater New Bedford

Economic Data

Percentage Make-Up of Total Labor Market by Negative or Non-Negative* Growth and Make-Up of Total Labor Market by Non-Negative Growth Industries (Jobs Created '07-'08), Q3

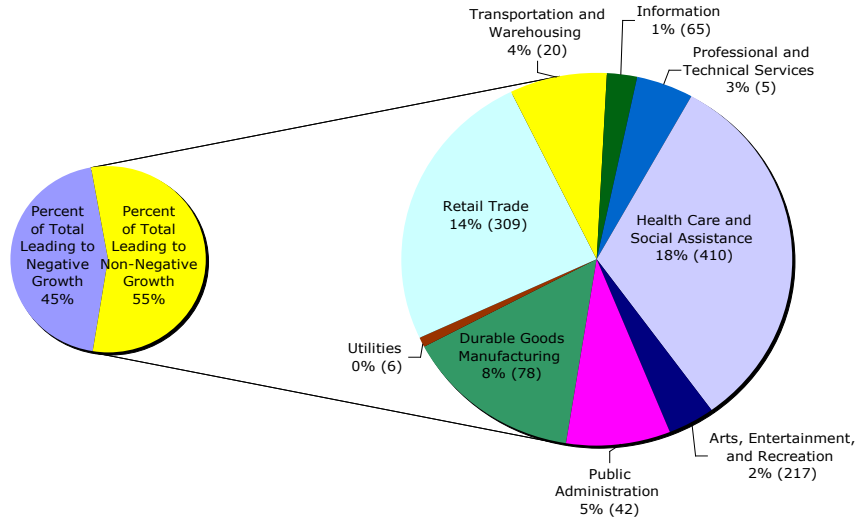
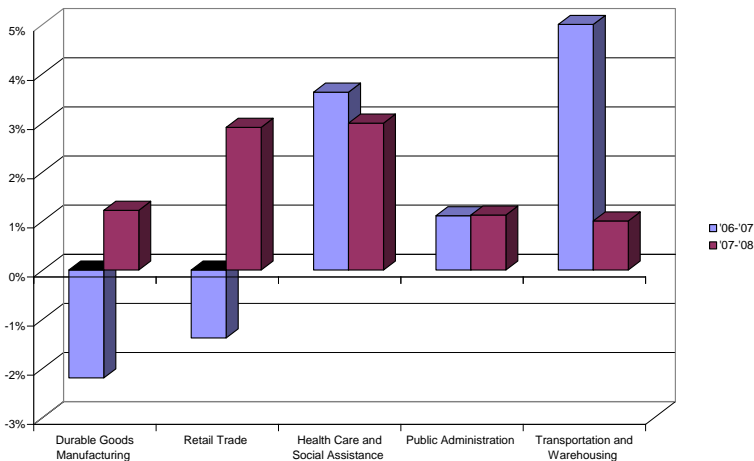


Figure 1¹

*Please note that Non-Negative refers to industries with both positive growth and zero growth (stable industries though non necessarily growing)

Based on the Third Quarter data in 2007 and 2008 it is evident that of all non-negative growth over the period the largest percentage of Greater New Bedford's working population is employed in Health Care and Social Assistance, Retail Trade, Durable Goods Manufacturing, Public Administration, and Transportation and Warehousing: all other non-negative growth industries represent three percent or less of the total working population.

Change Over '06-'07 and '07-'08 for the Five Industries with Greatest Non-Negative Growth, Q3



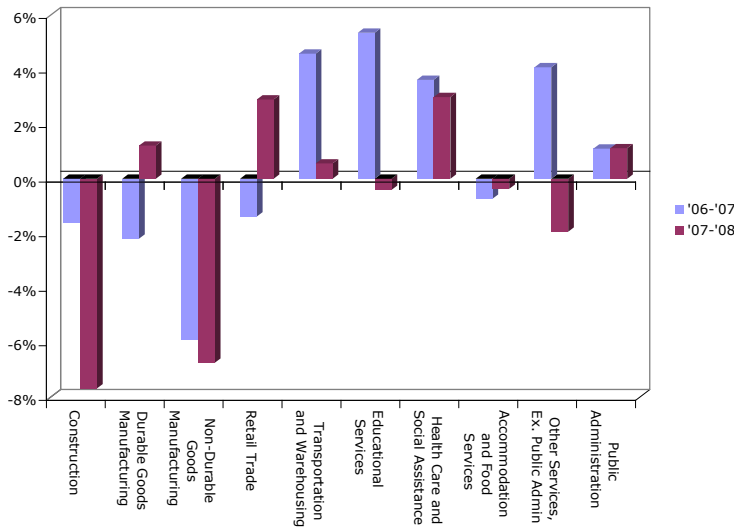
Industry	Growth Over Q3 '07-'08	Working Population Q3 2008
Health Care and Social Assistance	3%	18%
Retail Trade	1%	14%
Durable Goods Manufacturing	1%	8%
Public Admin.	1%	5%
Transportation and Warehousing	1%	4%

Table 1²

Figure 2³

Over Q3 '07-'08 there was a net loss of 179 jobs in Greater New Bedford;⁴ however, the industries displayed in Figure 2 and Table 1 were responsible for a total of 859 jobs created during the period. These five industries are the highest growing industries. Another industry, Arts, Entertainment and Recreation (comprising only 2% of the working population in 2008) contributed 217 jobs over the Third Quarter 2007 to 2008 period, making it a possibly up-and-coming industry.

Change Over '06-'07 and '07-'08 for the Ten Largest Industries, Q3



Industry in Decline Over Both Periods	Over Q3 '06-'07 '07-'08	Working Population Q3 2008
Construction	-2% -8%	5%
Non-Durable Goods Manufacturing	-6% -7%	6%

Table 2⁵

Figure 3⁶ (Please see Appendix C for Statewide Comparison)

Based on the Third Quarter data over '06-'07 and '07-'08 the largest declines have been in Construction and Non-Durable Goods Manufacturing.

Greater New Bedford Regional Workforce Board Information

The Greater New Bedford Regional Workforce Investment Board is receiving \$3,175,552 from ARRA. The money is to be spent as follows:⁷

- \$84,424 Wagner-Peyser
- \$651,578 WIA Adult
 - o With the additional funds Greater New Bedford will be intensifying core and support services and adding additional training funding (see below)
- \$696,554 WIA Dislocated Worker
 - o Dislocated workers will receive the same core and support services as adults and have access to the same training programs as adults, as well as the additional short-term training program
- \$185,652 Re-Employment Services
 - o Greater New Bedford will be processing UI claimants through Career Center Seminars, assessing needs and developing Career Action Plans for each claimant⁸
- \$1,557,344 WIA Youth
 - o Greater New Bedford spent almost 84% of its Youth budget (significantly above the 60% requested to be spent by 9/30/2009) on the Summer Employment Program to serve 430 youth through 12 programs⁹

Greater New Bedford has clearly laid out the plan for the 60% of funds for training purposes.¹⁰

- \$269,000 for GED/ESOL programs connected to work readiness, a group training option
 - o To be utilized by 80 individuals for Pre-GED, GED or ESOL programs
 - o Services to be provided through a Request for Proposals
- \$200,000 for Weatherization/Construction, a group training option
 - o To be utilized by 20 Adults and 30 Dislocated Workers

- Services to be provided through a Request for Proposals, possibly with Clean Edison and the Institute for Environmental Education
- Certification through Building Performance Institute
- \$30,000 for Short-term enhancement training, for dislocated workers, separate from ITAs
 - The focus of these opportunities is to help dislocated workers quickly (within 1-3 months) gain new marketable skills
 - Possibilities for training could be in a customized, group or client specific (such as QuickBooks) focus
- \$30,000 for Brownfields' 90-hour Work Certified component
 - To augment services for current Brownfield trainees by adding this training and certification
- \$64,000 for Support Services
 - Such as transportation or childcare funds
- \$140,000 for Individual Training Accounts¹¹
 - Greater New Bedford has provided 38 dislocated workers and 7 adults with individual training accounts (in addition to the 135 already served with WIA funds)
 - Some possible occupational training areas are CNAs, Nursing, Commercial Drivers Licenses, Computer Office training, among others
 - Currently the training programs average 21 weeks and cost \$3,000¹²
 - The current expenditure is \$7,000 over the originally projected ITA budget

Greater New Bedford's training will include Individual Training Accounts, Group Training, Skill Upgrading and ABE/ESOL. The region may possibly also offer On-the-Job Training and Customized training.¹³ Also, the region will be offering both Support Services and Needs-Related Payments.¹⁴

Greater New Bedford expects the main focus of services not be serving a much greater population, but intensifying the services they provide. Currently, other than one new WIB staff person for "green jobs" and youth activity, Greater New Bedford does not yet expect to hire new staff.¹⁵ Greater New Bedford has been able to retain or realign 14.35 Full-time employees through use of ARRA funds.¹⁶ \$49,000 is being allotted to the Career Center to expand space at a location on Dover Street.¹⁷

While most of the funding is to be used to augment current services, Greater New Bedford will be beginning the Seminars (RES), adding workshops, adding the short-term focus training and encouraging staff to approach employment with an industry specific focus. Greater New Bedford will continue to use the Labor Needs Template, as it has found this to be the best method to display job openings and employer needs.¹⁸

¹ Employment and Wages (ES-202).” The Executive Office of Labor and Workforce Development. Third Quarter data 2006, 2007, 2008 for New Bedford in all types of ownership by Industry Totals by 2-digit NAICS Code.

http://lmi2.detma.org/lmi/lmi_es_a.asp

² Ibid.

³ Ibid.

⁴ Ibid.

⁵ Ibid.

⁶ Ibid.

⁷ “Massachusetts Regional ARRA Allocations.”

http://massworkforce.com/documents/2009_ARRA_Allocations.xls. 15 September 2009.

⁸ ARRA Business Plan-Final Planning Questions. Attachment H. Page 9.

<http://www.gnbwib.org/PDFfiles/2ARRAPlanNarrativeFolder.pdf>. 15 September 2009.

⁹ ARRA Update 9-21-09. Pages 1-2. Electronic Correspondence with Len Coriarty, Executive Director of the Greater New Bedford Workforce Investment Board. 29 September 2009.

¹⁰ ARRA Executive Summary. Pages 2-3 of 4 in pdf.

<http://www.gnbwib.org/PDFfiles/1ARRAPlanNarrativeFolder.pdf>. 15 September 2009.

¹¹ ARRA Update 9-21-09. Page 2. Electronic Correspondence with Len Coriarty, Executive Director of the Greater New Bedford Workforce Investment Board. 29 September 2009.

¹² ARRA Business Plan-Final Planning Questions. Page 5 of 23 in pdf.

<http://www.gnbwib.org/PDFfiles/2ARRAPlanNarrativeFolder.pdf>. 15 September 2009.

¹³ ARRA Business Plan-Final Planning Questions. Attachment H. Page 13.

<http://www.gnbwib.org/PDFfiles/2ARRAPlanNarrativeFolder.pdf>. 15 September 2009.

¹⁴ ARRA Business Plan-Final Planning Questions. Attachment H. Page 14.

<http://www.gnbwib.org/PDFfiles/2ARRAPlanNarrativeFolder.pdf>. 15 September 2009.

¹⁵ ARRA Business Plan-Final Planning Questions. Attachment H. Page 10.

<http://www.gnbwib.org/PDFfiles/2ARRAPlanNarrativeFolder.pdf>. 15 September 2009.

¹⁶ ARRA Update 9-21-09. Page 1. Electronic Correspondence with Len Coriarty, Executive Director of the Greater New Bedford Workforce Investment Board. 29 September 2009.

¹⁷ ARRA Update 9-21-09. Page 1. Electronic Correspondence with Len Coriarty, Executive Director of the Greater New Bedford Workforce Investment Board. 29 September 2009.

¹⁸ ARRA Update 9-21-09. Page 1. Electronic Correspondence with Len Coriarty, Executive Director of the Greater New Bedford Workforce Investment Board. 29 September 2009.

Appendix A

Third Quarter Data

Average Monthly Employment

	2006	2007	2008
Total, All Industries	80,008	80,264	80,085
Agriculture, Forestry, Fishing & Hunting	1,723	1,563	1,497
Mining	32	45	37
Construction	3,994	3,929	3,627
Manufacturing	11,600	11,159	10,917
Durable Goods Manufacturing	6,559	6,415	6,493
Non-Durable Goods Manufacturing	5,041	4,744	4,424
Utilities	350	359	365
Wholesale Trade	3,135	3,208	3,101
Retail Trade	10,785	10,636	10,945
Transportation and Warehousing	3,403	3,559	3,579
Information	1,092	1,039	1,104
Finance and Insurance	1,796	1,764	1,743
Real Estate and Rental and Leasing	877	887	716
Professional and Technical Services	2,016	2,029	2,034
Management of Companies and Enterprises	523	520	507
Administrative and Waste Services	3,069	2,950	2,755
Educational Services	6,034	6,357	6,331
Health Care and Social Assistance	13,223	13,702	14,112
Arts, Entertainment, and Recreation	1,520	1,580	1,797
Accommodation and Food Services	7,364	7,310	7,283
Other Services, Ex. Public Admin	3,766	3,920	3,844
Public Administration	3,706	3,747	3,789

Data extracted from:

“Employment and Wages (ES-202).” The Executive Office of Labor and Workforce Development. Third Quarter data 2006, 2007, 2008 for New Bedford in all types of ownership by Industry Totals by 2-digit NAICS Code. http://lmi2.detma.org/lmi/lmi_es_a.asp

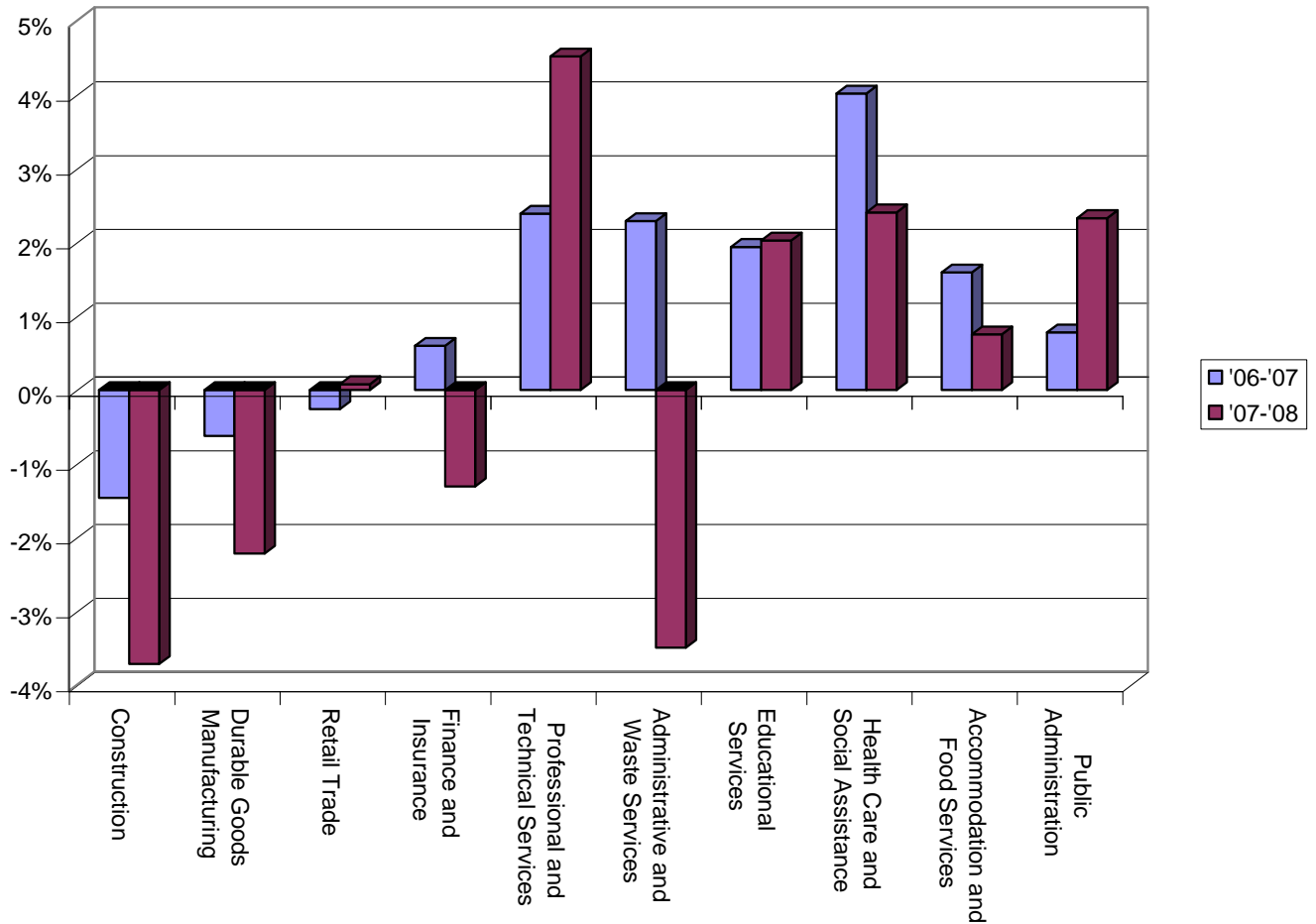
Appendix B

Statewide Third Quarter Data	Average Monthly Employment		
	2006	2007	2008
Total, All Industries	3,200,233	3,240,481	3,251,799
Agriculture, Forestry, Fishing & Hunting	7,749	7,543	7,462
Mining	1,842	1,596	1,339
Construction	161,049	158,696	152,804
Manufacturing	298,840	294,968	286,723
Durable Goods Manufacturing	196,222	195,003	190,681
Non-Durable Goods Manufacturing	102,618	99,964	96,042
Utilities	13,068	13,394	13,741
Wholesale Trade	137,726	139,090	137,014
Retail Trade	349,751	348,845	349,118
Transportation and Warehousing	99,927	100,754	99,560
Information	93,745	94,916	95,374
Finance and Insurance	181,868	182,958	180,567
Real Estate and Rental and Leasing	46,161	45,184	43,897
Professional and Technical Services	246,776	252,674	264,095
Management of Companies and Enterprises	61,790	61,292	61,193
Administrative and Waste Services	176,723	180,768	174,454
Educational Services	264,293	269,417	274,878
Health Care and Social Assistance	471,170	490,101	501,900
Arts, Entertainment, and Recreation	63,976	65,044	65,814
Accommodation and Food Services	264,944	269,162	271,187
Other Services, Ex. Public Admin	124,406	128,601	132,042
Public Administration	134,428	135,479	138,636

Data extracted from:

“Employment and Wages (ES-202).” The Executive Office of Labor and Workforce Development. Third Quarter data 2006, 2007, 2008 for Massachusetts in all types of ownership by Industry Totals by 2-digit NAICS Code. http://lmi2.detma.org/lmi/lmi_es_a.asp

Statewide Change Over '06-'07 and '07-'08 for the Ten Largest Industries, Q3



Data Extracted From:

“Employment and Wages (ES-202).” The Executive Office of Labor and Workforce Development. Third Quarter data 2006, 2007, 2008 for Massachusetts in all types of ownership by Industry Totals by 2-digit NAICS Code. http://lmi2.detma.org/lmi/lmi_es_a.asp