

# North Central Massachusetts

## Economic Data

Percentage Make-Up of Total Labor Market by Negative or Non-Negative\* Growth and Make-Up of Total Labor Market by Non-Negative Growth Industries (Jobs Created '07-'08), Q3

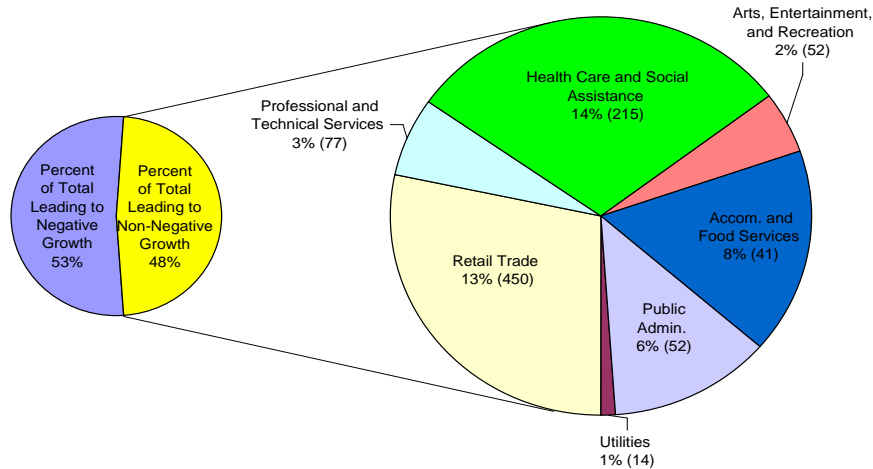
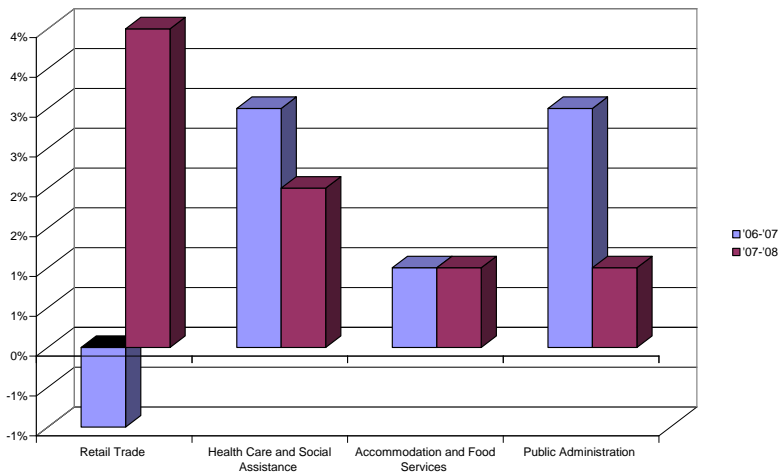


Figure 1<sup>1</sup>

\*Please note that Non-Negative refers to industries with both positive growth and zero growth (stable industries though non necessarily growing)

Based on the Third Quarter data in 2007 and 2008 it is evident that of all non-negative growth over the period the largest percentage of North Central Massachusetts' working population is employed in Health Care and Social Assistance, Retail Trade, Accommodation and Food Services, and Public Administration: all other non-negative growth industries represent three percent or less of the total working population.

Change Over '06-'07 and '07-'08 for the Four Industries with Greatest Non-Negative Growth, Q3

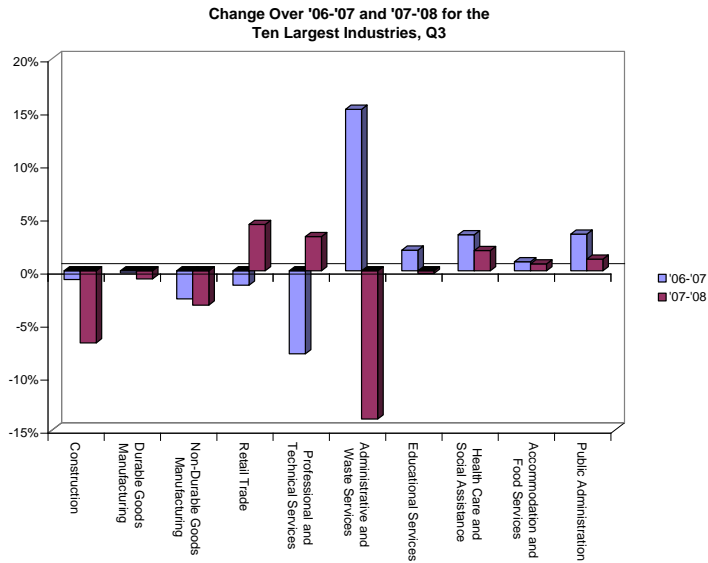


Industry	Growth Over Q3 '07-'08	Working Population Q3 2008
Health Care and Social Assistance	2%	14%
Retail Trade	4%	13%
Accommodation and Food Services	1%	8%
Public Administration	1%	6%

Table 1<sup>2</sup>

Figure 2<sup>3</sup>

Over Q3 '07-'08 there was a net loss of 721 jobs in North Central Massachusetts:<sup>4</sup> however, the industries displayed in Figure 2 and Table 1 were responsible for a total growth of 758 jobs created during the period. These four industries are the highest growing industries.



Industry in Decline Over Both Periods	Over Q3 '06-'07 '07-'08	Working Population Q3 2008
Durable Goods Manufacturing	0% -1%	8%
Non- Durable Goods Manufacturing	-3% -3%	11%
Construction	-1% -7%	5%

Table 2<sup>5</sup>

Figure 3<sup>6</sup> (Please see Appendix C for Statewide Comparison)

Based on the Third Quarter data over '06-'07 and '07-'08, the largest declines have been in both Durable and Non-Durable Goods Manufacturing, and Construction (see below for evidence of new manufacturing plants in North Central Massachusetts).

## North Central Massachusetts Regional Workforce Board Information

The North Central Mass Regional Workforce Investment Board is receiving \$2,429,091 from ARRA. The money is to be spent as follows:<sup>7</sup>

- \$92,649 Wagner-Peyser
  - o With the additional ARRA funds North Central Massachusetts plans to serve 9,507 additional jobseekers in FY10 and another 9,650 in FY11<sup>8</sup>
  - o With the additional ARRA funds North Central Massachusetts plans to serve 325 additional employers in FY10 and another 350 in FY11<sup>9</sup>
- \$426,445 WIA Adult
  - o With the additional ARRA funds North Central Massachusetts plans to serve 60 additional Adults in FY10<sup>10</sup>
    - Of these 60, 46 will enter some kind of training: 44 in Occupational Skills Training (including ITAs), 1 in On-the-Job Training and 1 in Adult Basic Education/ESOL
      - Of these who enter training, 37 will be in training that will result in attainment of a certificate or credential
    - 20 Adults will receive Support Services, 5 of whom will receive Needs-Based payments
- \$719,475 WIA Dislocated Worker
  - o With the additional ARRA funds North Central Massachusetts plans to serve 62 additional Dislocated Workers in FY10, 32 of which will be carried over into FY11<sup>11</sup>
    - Of these 62, all will enter some kind of training: 60 in Occupational Skills Training (including ITAs) and 2 in Adult Basic Education/ESOL

- Of these who enter training, 53 will be in training that will result in attainment of a certificate or credential
        - 2 Dislocated Workers will receive Support Services
- \$221,303 Re-Employment Services
  - With the additional ARRA funds North Central Massachusetts plans to serve a total of 9,835 UI Claimants: 4,825 in FY10 and 5,010 in FY11<sup>12</sup>
  - Claimants will first attend a Seminar, then a mini-assessment and complete an inventory survey to match claimant needs with Career Center services- the claimant will then be set up with workshops and a job specialist as needed<sup>13</sup>
  - North Central Massachusetts began increasing the capacity of UI sessions in November of 2008 to accommodate increased demand and is dedicated to fully training and cross-training all new staff<sup>14</sup>
- \$969,219 WIA Youth
  - Originally North Central Massachusetts planned to serve 400 youth through the Summer Employment Program, with 105 Out-of-School Participants; however, as of 9/10/09 North Central Massachusetts served 422 Youth through the program<sup>15, 16</sup>
  - 98% of Youth funding is planned to be used during May to September 2009, bringing the total to 100% by the end of October after the Summer Program is fully completed<sup>17</sup>

The Career Centers are expanding services by introducing new workshops for job seekers, developing a Common Needs Survey for triage and running group orientations for new UI claimants.<sup>18</sup> Also the Career Centers are focusing on case conferencing for service providers and continual training for service providers to ensure that customers are receiving optimal services.<sup>19</sup>

For new training options North Central Massachusetts is working in conjunction with their local CAP agency to develop a Weatherization program.<sup>20</sup> North Central Massachusetts currently has two training programs through DOL grants- one in Biotechnology and one through STEM.<sup>21</sup> The training programs are available through Individual Training Accounts and North Central Massachusetts is working to develop more ITA opportunities.<sup>22</sup> North Central Massachusetts is also directing ITA recipients to certificate and degree programs to the area Community Colleges and MassMEP- mainly in advanced manufacturing, biotech and energy.<sup>23</sup> The main focus on new training programs will center around growth in manufacturing, health care and education.<sup>24</sup> North Central also promotes two new manufacturing centers, Evergreen Solar and Bristol Myers-Squibb, as employment areas.<sup>25</sup>

North Central Massachusetts will offer training in the form of ITAs, On-the-Job Training, Customized Training, Skill Upgrading and Adult Basic Education/ESOL, but not in group training.<sup>26</sup>

New hires will include five FTEs hired in the Career Centers (three in Leominster and two in Gardner), two Case Managers hired by DWS and one Claims Agent hired by DUA.<sup>27</sup>

---

<sup>1</sup> Employment and Wages (ES-202).” The Executive Office of Labor and Workforce Development. Third Quarter data 2006, 2007, 2008 for Northern Worcester in all types of ownership by Industry Totals by 2-digit NAICS Code. [http://lmi2.detma.org/lmi/lmi\\_es\\_a.asp](http://lmi2.detma.org/lmi/lmi_es_a.asp)

<sup>2</sup> Ibid.

<sup>3</sup> Ibid.

<sup>4</sup> Ibid.

<sup>5</sup> Ibid.

<sup>6</sup> Ibid.

<sup>7</sup> “Massachusetts Regional ARRA Allocations.”

[http://massworkforce.com/documents/2009\\_ARRA\\_Allocations.xls](http://massworkforce.com/documents/2009_ARRA_Allocations.xls). 15 September 2009.

<sup>8</sup> Attachment G. Program Planning Charts. Chart 1: FY2010 and FY2011 ARRA Labor Exchange Program Summary.

<sup>9</sup> Attachment G. Program Planning Charts. Chart 1: FY2010 and FY2011 ARRA Labor Exchange Program Summary.

<sup>10</sup> Attachment G. Program Planning Charts. Chart 2: FY2010 and FY2011 ARRA Title I Program Summary for Adults.

<sup>11</sup> Attachment G. Program Planning Charts. Chart 3: FY2010 and FY2011 ARRA Title I Program Summary for Dislocated Workers.

<sup>12</sup> Attachment G. Program Planning Charts. Chart 1: FY2010 and FY2011 ARRA Labor Exchange Program Summary.

<sup>13</sup> Attachment H. Narrative Questions 7-7-09 MOD #2. Page 5.

<sup>14</sup> Attachment H. Narrative Questions 7-7-09 MOD #2. Page 12.

<sup>15</sup> Attachment G. Program Planning Charts. Chart 4: FY2010 Title I ARRA Program Summary for Youth.

<sup>16</sup> Title I Recovery Act Summer Program Enrollments by Area as of 09/10/2009. MOSES. Division of Career Services, Analysis and Reporting.

<sup>17</sup> Attachment H. Narrative Questions 7-7-09 MOD #2. Pages 15-16.

<sup>18</sup> Attachment H. Narrative Questions 7-7-09 MOD #2. Page 4.

<sup>19</sup> Ibid.

<sup>20</sup> Attachment H. Narrative Questions 7-7-09 MOD #2. Page 2.

<sup>21</sup> Attachment H. Narrative Questions 7-7-09 MOD #2. Page 6.

<sup>22</sup> Ibid.

<sup>23</sup> Attachment H. Narrative Questions 7-7-09 MOD #2. Page 2.

<sup>24</sup> Attachment H. Narrative Questions 7-7-09 MOD #2. Page 1.

<sup>25</sup> Ibid.

<sup>26</sup> Attachment H. Narrative Questions 7-7-09 MOD #2. Page 6.

<sup>27</sup> Attachment H. Narrative Questions 7-7-09 MOD #2. Page 5.

Appendix A  
Third Quarter Data

	Average Monthly Employment		
	2006	2007	2008
<b>Total, All Industries</b>	80,124	80,414	79,693
Agriculture, Forestry, Fishing & Hunting	353	403	375
Mining	107	81	67
Construction	4,607	4,569	4,259
<b>Manufacturing</b>	15,597	15,349	15,020
Durable Goods Manufacturing	6,715	6,702	6,651
Non-Durable Goods Manufacturing	8,883	8,648	8,369
Utilities	335	400	414
Wholesale Trade	2,314	2,321	2,280
Retail Trade	10,435	10,294	10,744
Transportation and Warehousing	2,139	2,151	2,083
Information	1,108	1,124	1,108
Finance and Insurance	1,699	1,669	1,592
Real Estate and Rental and Leasing	848	812	750
Professional and Technical Services	2,582	2,380	2,457
Management of Companies and Enterprises	1,005	899	813
Administrative and Waste Services	3,494	4,026	3,464
Educational Services	7,384	7,528	7,510
Health Care and Social Assistance	10,826	11,194	11,409
Arts, Entertainment, and Recreation	2,039	1,912	1,964
Accommodation and Food Services	6,183	6,236	6,277
Other Services, Ex. Public Admin	2,496	2,333	2,326
Public Administration	4,573	4,731	4,783

Data extracted from:

“Employment and Wages (ES-202).” The Executive Office of Labor and Workforce Development. Third Quarter data 2006, 2007, 2008 for Northern Worcester in all types of ownership by Industry Totals by 2-digit NAICS Code. [http://lmi2.detma.org/lmi/lmi\\_es\\_a.asp](http://lmi2.detma.org/lmi/lmi_es_a.asp)

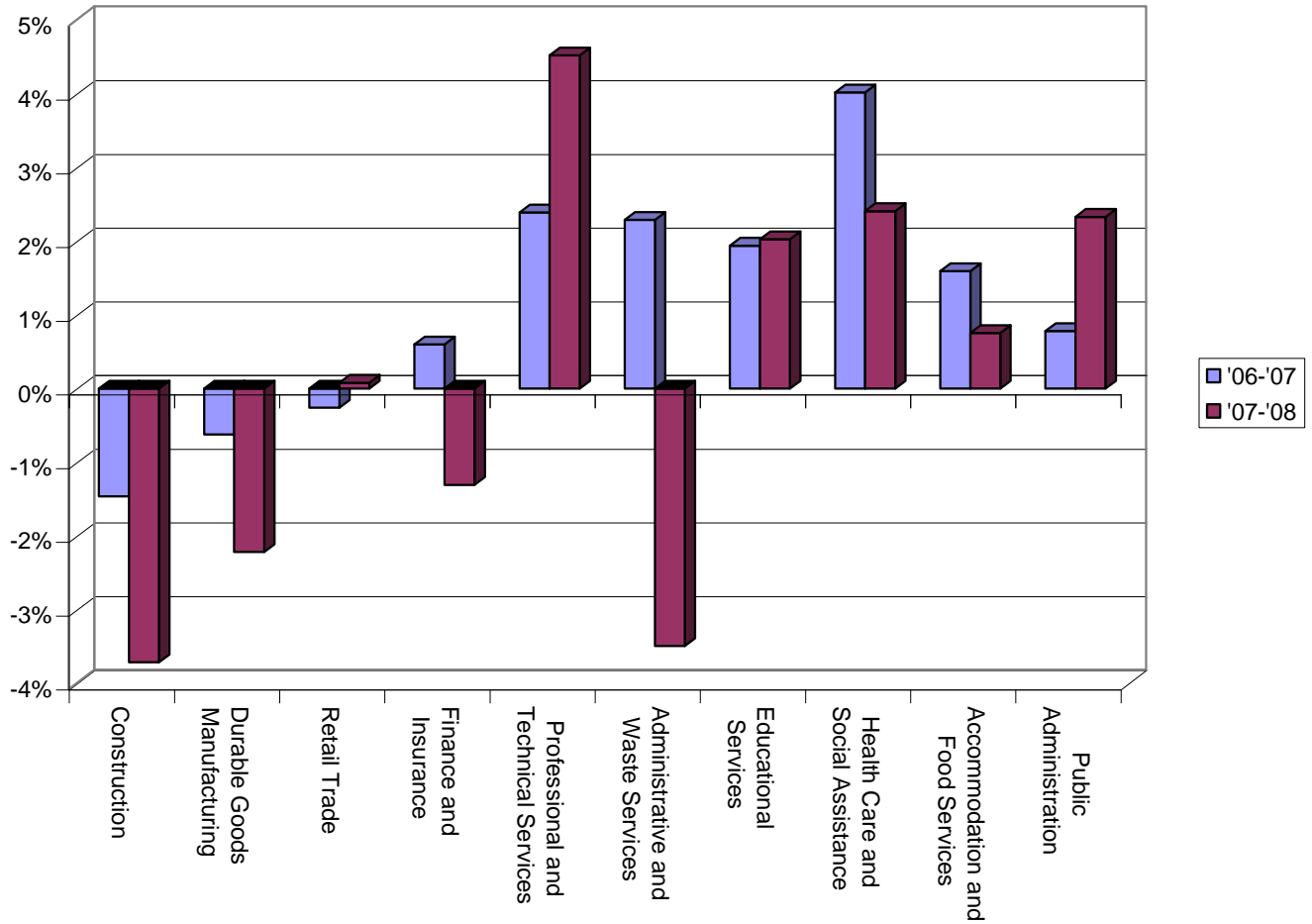
Appendix B

Statewide Third Quarter Data	Average Monthly Employment		
	2006	2007	2008
<b>Total, All Industries</b>	3,200,233	3,240,481	3,251,799
Agriculture, Forestry, Fishing & Hunting	7,749	7,543	7,462
Mining	1,842	1,596	1,339
Construction	161,049	158,696	152,804
Manufacturing	298,840	294,968	286,723
Durable Goods Manufacturing	196,222	195,003	190,681
Non-Durable Goods Manufacturing	102,618	99,964	96,042
Utilities	13,068	13,394	13,741
Wholesale Trade	137,726	139,090	137,014
Retail Trade	349,751	348,845	349,118
Transportation and Warehousing	99,927	100,754	99,560
Information	93,745	94,916	95,374
Finance and Insurance	181,868	182,958	180,567
Real Estate and Rental and Leasing	46,161	45,184	43,897
Professional and Technical Services	246,776	252,674	264,095
Management of Companies and Enterprises	61,790	61,292	61,193
Administrative and Waste Services	176,723	180,768	174,454
Educational Services	264,293	269,417	274,878
Health Care and Social Assistance	471,170	490,101	501,900
Arts, Entertainment, and Recreation	63,976	65,044	65,814
Accommodation and Food Services	264,944	269,162	271,187
Other Services, Ex. Public Admin	124,406	128,601	132,042
Public Administration	134,428	135,479	138,636

Data extracted from:

“Employment and Wages (ES-202).” The Executive Office of Labor and Workforce Development. Third Quarter data 2006, 2007, 2008 for Massachusetts in all types of ownership by Industry Totals by 2-digit NAICS Code. [http://lmi2.detma.org/lmi/lmi\\_es\\_a.asp](http://lmi2.detma.org/lmi/lmi_es_a.asp)

**Statewide Change Over '06-'07 and '07-'08 for the Ten Largest Industries, Q3**



Data Extracted From:

“Employment and Wages (ES-202).” The Executive Office of Labor and Workforce Development. Third Quarter data 2006, 2007, 2008 for Massachusetts in all types of ownership by Industry Totals by 2-digit NAICS Code. [http://lmi2.detma.org/lmi/lmi\\_es\\_a.asp](http://lmi2.detma.org/lmi/lmi_es_a.asp)