

North Shore

Economic Data

Percentage Make-Up of Total Labor Market by Negative or Non-Negative* Growth and Make-Up of Total Labor Market by Non-Negative Growth Industries (Jobs Created '07-'08), Q3

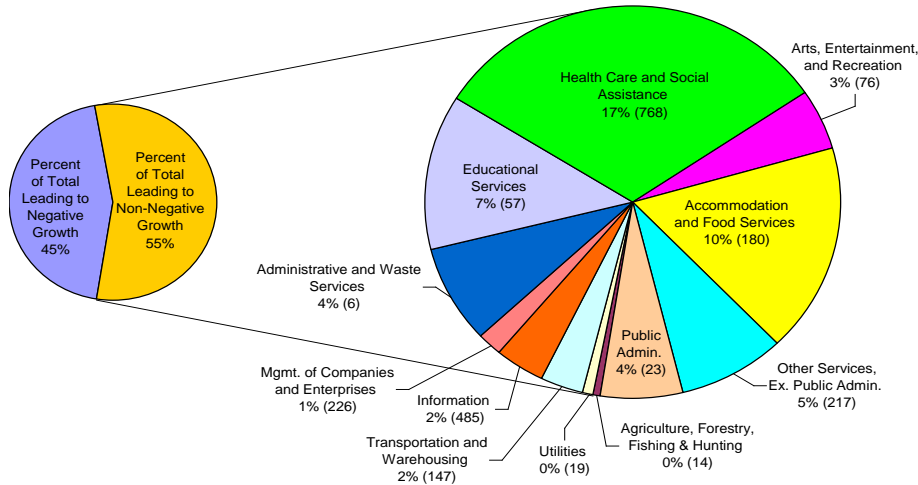


Figure 1¹

*Please note that Non-Negative refers to industries with both positive growth and zero growth (stable industries though non necessarily growing)

Based on the Third Quarter data in 2007 and 2008 it is evident that of all non-negative growth over the period, the largest percentage of the North Shore's working population is employed in Health Care and Social Assistance, Accommodation and Food Services, and Educational Services: all other non-negative growth industries represent five percent or less of the total working population.

Change Over '06-'07 and '07-'08 for the Three Industries with Greatest Non-Negative Growth, Q3

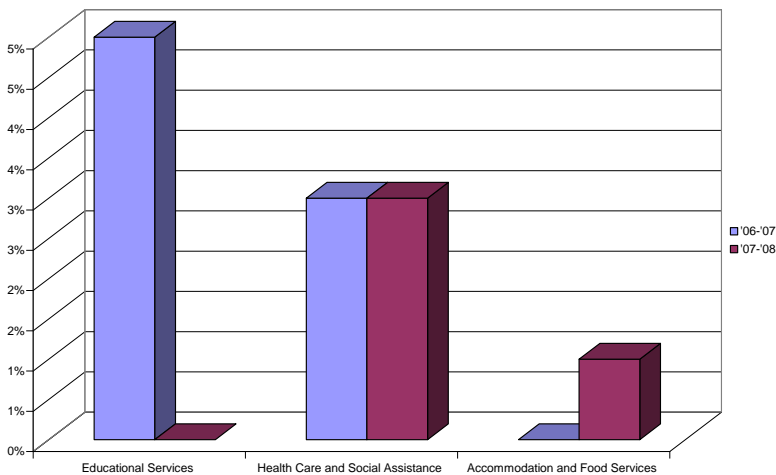
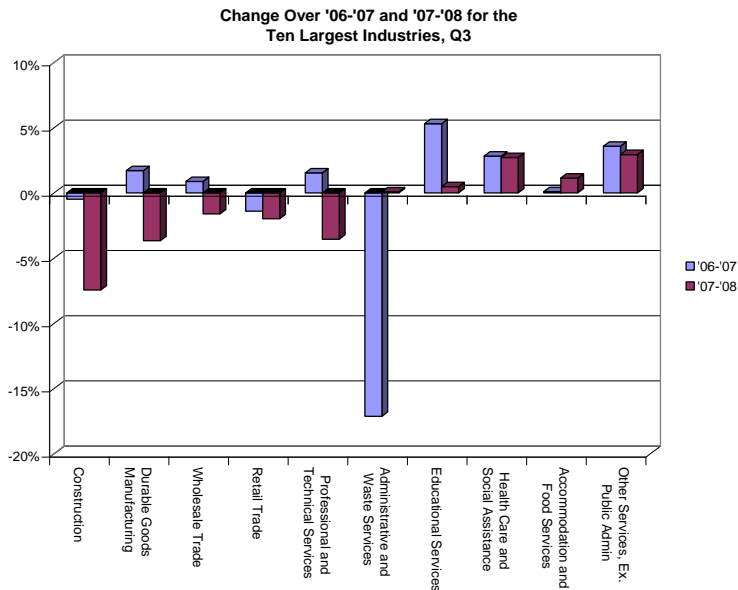


Figure 2³

Industry	Growth Over Q3 '07-'08	Working Population Q3 2008
Health Care and Social Assistance	3%	17%
Accommodation and Food Services	1%	10%
Educational Services	0%	7%

Table 1²

Over Q3 '07-'08 there was a net loss of 173 jobs in North Shore:⁴ however, the industries displayed in Figure 2 and Table 1 were responsible for a total growth of 1,005 jobs created during the period. These three industries are the highest growing industries. Two relatively smaller industries, Information (2% in 2008) and Management of Companies and Enterprises (1% in 2008), contributed 485 and 226 jobs, respectively, over the Third Quarter 2007-2008.



Industry in Decline	Over Q3 '06-'07 '07-'08	Working Population Q3 2008
Durable Goods Manufacturing	+2% -4%	9%
Construction	0% -7%	4%
Retail Trade	-1% -2%	15%

Table 2⁵

Figure 3⁶ (Please see Appendix C for Statewide Comparison)

Based on the Third Quarter data over '06-'07 and '07-'08, the largest declines have been in Durable Goods Manufacturing, Construction, and Retail Trade.

North Shore Regional Workforce Board Information

The North Shore Workforce Investment Board is receiving \$2,595,445 from ARRA. The money will be spent as follows:^{7, 8}

- \$150,706 Wagner-Peyser
 - o Funding will be used in the three Career Centers (Gloucester, Lynn, Salem) for core services
- \$448,211 WIA Adult
 - o The North Shore expects to provide core and support services, and training to 80 low-income individuals
- \$716,928 WIA Dislocated Worker
 - o The North Shore expects to provide core and support services, and training to 235 dislocated individuals
- \$260,860 Re-Employment Services
- \$1,018,740 WIA Youth
 - o The North Shore expects to serve 570 youth through summer jobs and additional services throughout the year
 - In the summer employment program the North Shore served 294 low-income, at-risk ARRA youth⁹, and hope to have some additional ARRA funds for the summer of 2010
 - In the Fall Work Experience program, the North Shore expects to aid approximately 30 older youth
 - The North Shore would like to maximize efforts for Out-of-School youth and aims to serve approximately 25 older youth with GED programs, training and core services

The majority of training will be fulfilled through Individual Training Accounts. In addition, the Adult and Dislocated Worker funds will also be used to develop new training programs. Five of the new training programs resulting from May 2009 bids are:

1. Building Performance Institute Certifications (North Shore Community College)
 - a. including Building Analyst/Envelope Specialist (i.e., Energy Auditing Skills)
2. Certified Nurse Aide Training (North Shore Community College)
 - a. for individuals for whom English is their Second Language
3. Pharmacy Technicians and Medical Assistants (Salem State College)
4. Geographic Information Specialists (Salem State College)
5. Operation Bootstrap
 - a. for English Language Learners on entering health care professions

These five programs are expected to serve around 60 individuals and will begin in the Fall of 2009, funded with \$200,000 of ARRA training money. Individuals can participate in the group training programs through referral via the North Shore Career Centers. The North Shore expects to hold another round of bidding for new training programs in late fall/early winter.

¹ Employment and Wages (ES-202).” The Executive Office of Labor and Workforce Development. Third Quarter data 2006, 2007, 2008 for South Essex in all types of ownership by Industry Totals by 2-digit NAICS Code.

http://lmi2.detma.org/lmi/lmi_es_a.asp

² Ibid.

³ Ibid.

⁴ Ibid.

⁵ Ibid.

⁶ Ibid.

⁷ All from personal electronic correspondence with Mary Sarris, Executive Director of the North Shore WIB. September 9, 2009.

⁸ “Massachusetts Regional ARRA Allocations.”

http://massworkforce.com/documents/2009_ARRA_Allocations.xls. 15 September 2009.

⁹ Title I Recovery Act Summer Program Enrollments by Area as of 09/10/2009. MOSES. Division of Career Services, Analysis and Reporting.

Appendix A
Third Quarter Data

	Average Monthly Employment		
	2006	2007	2008
Total, All Industries	167,724	167,235	167,062
Agriculture, Forestry, Fishing & Hunting	550	482	496
Mining	76	64	50
Construction	8,078	8,039	7,440
Manufacturing	20,040	19,909	19,292
Durable Goods Manufacturing	14,970	15,226	14,667
Non-Durable Goods Manufacturing	5,070	4,683	4,625
Utilities	753	775	794
Wholesale Trade	6,165	6,219	6,119
Retail Trade	26,446	26,077	25,560
Transportation and Warehousing	3,059	2,985	3,132
Information	3,000	3,043	3,528
Finance and Insurance	6,393	6,257	6,057
Real Estate and Rental and Leasing	2,208	2,226	2,181
Professional and Technical Services	8,294	8,421	8,122
Management of Companies and Enterprises	1,390	1,519	1,745
Administrative and Waste Services	8,913	7,386	7,392
Educational Services	11,271	11,869	11,926
Health Care and Social Assistance	27,514	28,289	29,057
Arts, Entertainment, and Recreation	4,791	4,588	4,664
Accommodation and Food Services	15,820	15,836	16,016
Other Services, Ex. Public Admin	7,129	7,384	7,601
Public Administration	5,835	5,868	5,891

Data extracted from:

“Employment and Wages (ES-202).” The Executive Office of Labor and Workforce Development. Third Quarter data 2006, 2007, 2008 for South Essex in all types of ownership by Industry Totals by 2-digit NAICS Code. http://lmi2.detma.org/lmi/lmi_es_a.asp

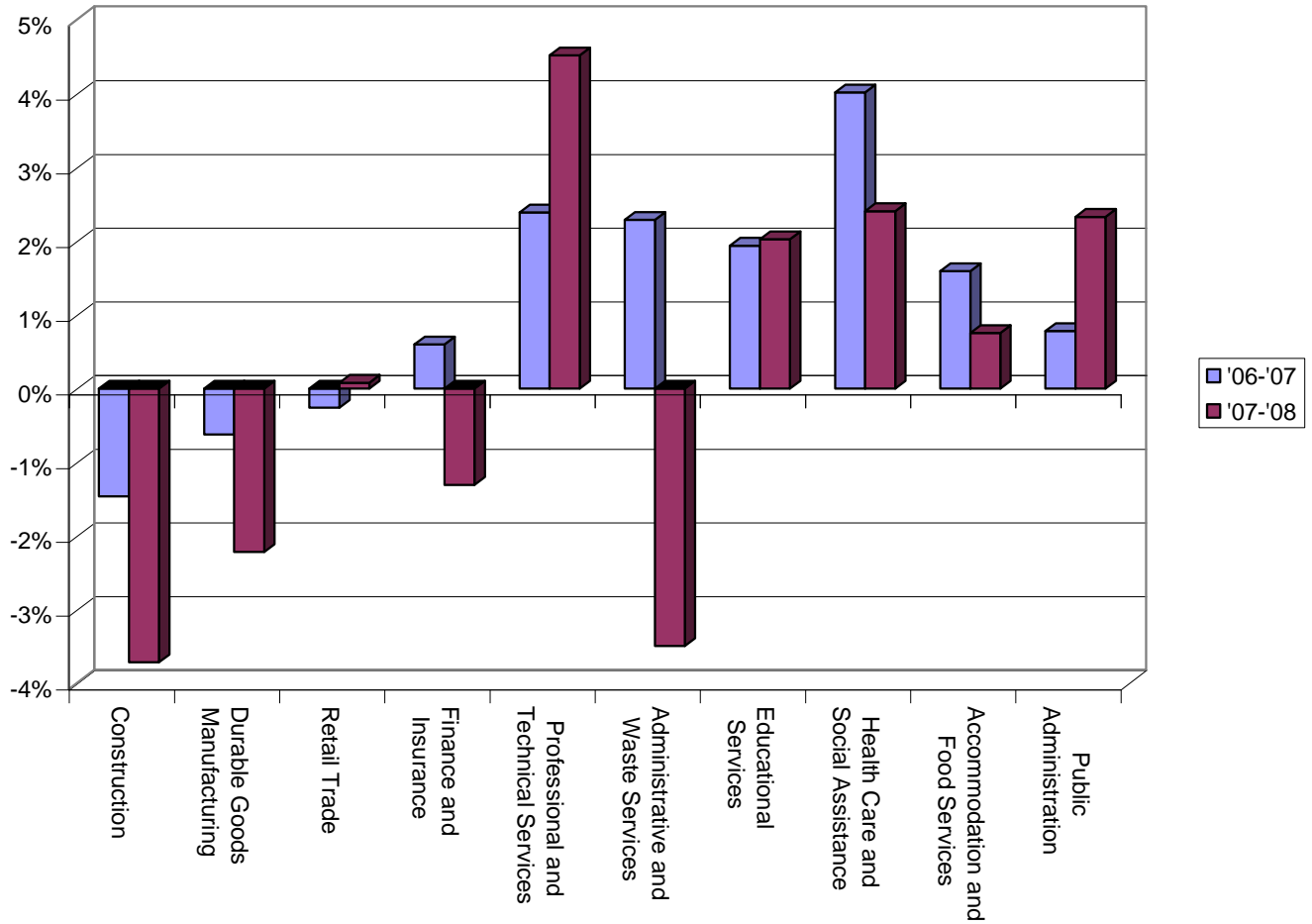
Appendix B

Statewide Third Quarter Data	Average Monthly Employment		
	2006	2007	2008
Total, All Industries	3,200,233	3,240,481	3,251,799
Agriculture, Forestry, Fishing & Hunting	7,749	7,543	7,462
Mining	1,842	1,596	1,339
Construction	161,049	158,696	152,804
Manufacturing	298,840	294,968	286,723
Durable Goods Manufacturing	196,222	195,003	190,681
Non-Durable Goods Manufacturing	102,618	99,964	96,042
Utilities	13,068	13,394	13,741
Wholesale Trade	137,726	139,090	137,014
Retail Trade	349,751	348,845	349,118
Transportation and Warehousing	99,927	100,754	99,560
Information	93,745	94,916	95,374
Finance and Insurance	181,868	182,958	180,567
Real Estate and Rental and Leasing	46,161	45,184	43,897
Professional and Technical Services	246,776	252,674	264,095
Management of Companies and Enterprises	61,790	61,292	61,193
Administrative and Waste Services	176,723	180,768	174,454
Educational Services	264,293	269,417	274,878
Health Care and Social Assistance	471,170	490,101	501,900
Arts, Entertainment, and Recreation	63,976	65,044	65,814
Accommodation and Food Services	264,944	269,162	271,187
Other Services, Ex. Public Admin	124,406	128,601	132,042
Public Administration	134,428	135,479	138,636

Data extracted from:

“Employment and Wages (ES-202).” The Executive Office of Labor and Workforce Development. Third Quarter data 2006, 2007, 2008 for Massachusetts in all types of ownership by Industry Totals by 2-digit NAICS Code. http://lmi2.detma.org/lmi/lmi_es_a.asp

Statewide Change Over '06-'07 and '07-'08 for the Ten Largest Industries, Q3



Data Extracted From:

“Employment and Wages (ES-202).” The Executive Office of Labor and Workforce Development. Third Quarter data 2006, 2007, 2008 for Massachusetts in all types of ownership by Industry Totals by 2-digit NAICS Code. http://lmi2.detma.org/lmi/lmi_es_a.asp