

South Coastal

Economic Data

Percentage Make-Up of Total Labor Market by Negative or Non-Negative* Growth and Make-Up of Total Labor Market by Non-Negative Growth Industries (Jobs Created '07-'08), Q3

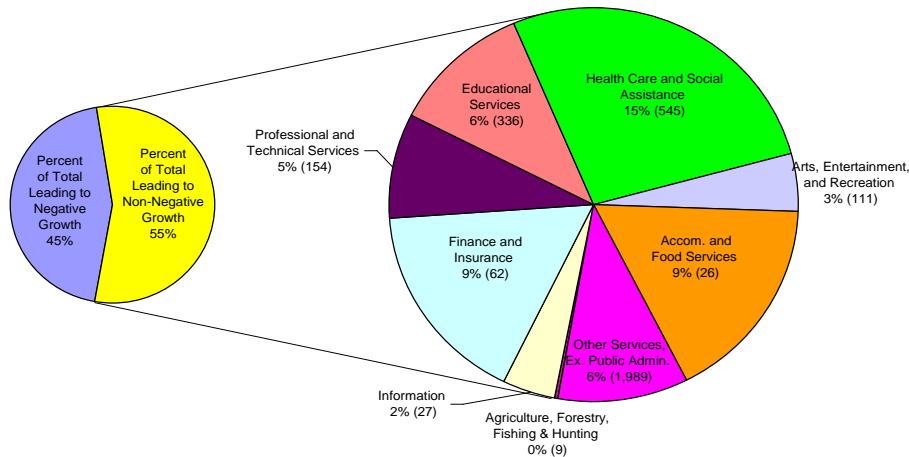


Figure 1¹

*Please note that Non-Negative refers to industries with both positive growth and zero growth (stable industries though non necessarily growing)

Based on the Third Quarter data in 2007 and 2008 it is evident that of all non-negative growth over the period the largest percentage of South Coastal's working population is employed in Health Care and Social Assistance, Accommodation and Food Services, Finance and Insurance, Educational Services, and Other Services Excluding Public Administration: all other non-negative growth industries represent five percent or less of the total working population.

Change Over '06-'07 and '07-'08 for the Four Industries with Greatest Non-Negative Growth, Q3

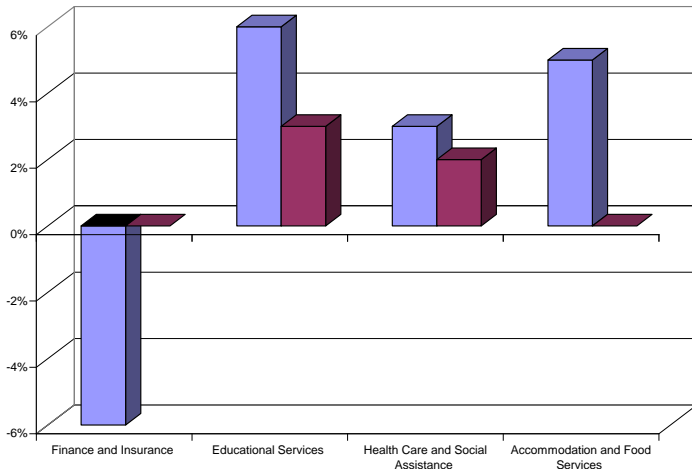


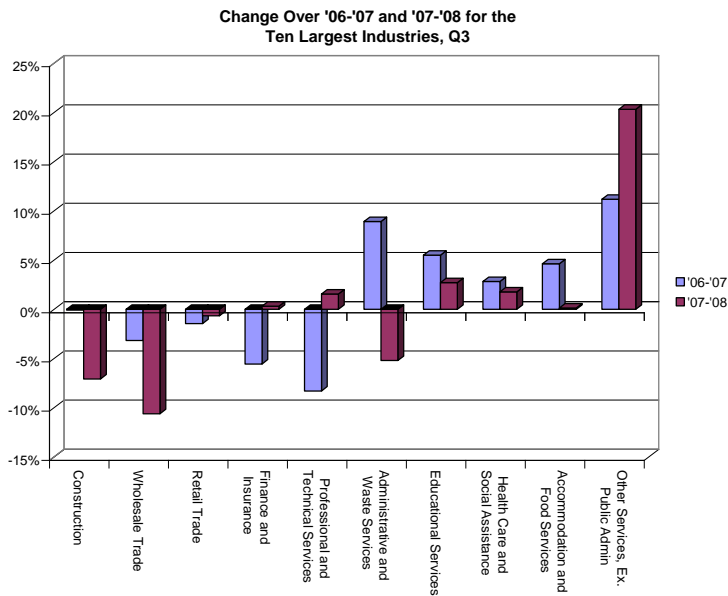
Figure 2³

Over Q3 '07-'08 there was a net loss of 523 jobs in South Coastal:⁴ however, the industries displayed in Figure 2 and Table 1 were responsible for a total growth of 969 jobs during the period. These four industries are the highest growing industries. Although Other Services is non-descript the industry did contribute 1,989 jobs over the Third Quarter 2007-2008.

Industry*	Growth Over Q3 '07-'08	Working Population Q3 2008
Health Care and Social Assistance	2%	15%
Accommodation and Food Services	0%	9%
Finance and Insurance	0%	9%
Educational Services	3%	6%

Table 1²

*Please note, Other Services, although one of the larger industries, was excluded because of the non-descript nature of the category in terms of sector targeting.



Industry in Decline	Over Q3 '06-'07 '07-'08	Working Population Q3 2008
Construction	0% -7%	7%
Wholesale Trade	-3% -11%	4%
Retail Trade	-1% -1%	14%

Table 2⁵

Figure 3⁶ (Please see Appendix C for Statewide Comparison)

Based on the Third Quarter data over '06-'07 and '07-'08, the largest declines have been in Construction, Wholesale Trade and Retail Trade.

South Coastal Regional Workforce Board Information

The South Coastal Regional Workforce Investment Board is receiving \$2,954,628 from ARRA. The funds will be spent as follows:⁷

- \$199,087 Wagner-Peyser
 - o South Coastal plans to be able to aid a total of 4,000 additional Wagner-Peyser customers (1,800 in FY10 and 2,200 in FY11), as well as an additional 245 employers (110 in FY10 and 135 in FY11)⁸
 - o With the 90% funding 2 new FTEs will be hired in the Career Centers in the first year and 1.5 in the second year⁹
 - o With the 10% there will be .25 FTE to support the WIB staff¹⁰
- \$482,857 WIA Adult
 - o South Coastal plans to be able to aid 56 Adults over FY10-FY11 (28 new in each year)¹¹
 - Each Adult will receive some type of training: currently the plan is to train 26 Adults each year in Occupational Skills Training (within that being mainly ITAs, some group contracts (12 new in FY10 and 10 new in FY11) and some in ESOL (4 new in each year)
 - o To accomplish the service aid to the new Adult customers, there will be three new program positions, counselors and job developers, in the Career Centers (amounting to 1.2 FTEs)¹²
 - o In terms of a funding breakdown:¹³
 - Training, ITAs= \$280,247
 - Support Services, mileage= \$28,000
 - Personnel and fringe= \$174,610

- \$946,141 WIA Dislocated Worker
 - o South Coastal plans to be able to aid 110 Dislocated Workers over FY10-FY11 (55 new in each year), in addition to those aided with funds at the end of FY09¹⁴
 - Each Dislocated Worker will receive some type of training: currently the plan is to train 53 (FY10) and 51 (FY11) Dislocated Workers each year in Occupational Skills Training (within that being mainly ITAs, some group contracts (10 FY10, 3 of which will carry over into FY11) and some in ESOL (2 new in each year)
 - o To accomplish the service aid to the new Dislocated Worker customers, there will be three new program positions, counselors and job developers, in the Career Centers (amounting to 1.8 FTEs)¹⁵
 - o In terms of a funding breakdown:¹⁶
 - Training, ITAs= \$602,041
 - Support Services, mileage= \$60,000
 - Personnel and fringe= \$284,100
- \$271,097 Re-Employment Services
 - o For the Re-Employment efforts for UI claimants five new FTEs will be hired. The additional staff will help compensate for the additional service consumers and also help to increase the intensity of services to existing consumers¹⁷
 - o South Coastal plans to be able to serve a total of 4,550 UI claimants (2,100 in FY10 and 2,450 in FY11)¹⁸
 - o Each claimant will attend a Career Center Seminar (of which there are 225 openings per week), followed by contact with a counselor to develop a Career Action Plan and determine the next step.¹⁹ Counselors will be accessible to RES customers on an as needed basis, and customers will also be able to set up job searching meetings with job specialists.²⁰ South Coastal plans to cross-train counselors to ensure that customers will be provided with the fullest information about services.
- \$1,055,446 WIA Youth
 - o In the Summer of 2009 (FY10) 257 youth were served through the Summer Employment program, and 68 more youth will be served through year-round activities in FY10. 148 Out-of-School youth will also be aided in FY10.²¹
 - o In the Summer of 2010 (FY11) South Coastal plans to help employ another 90 youth with ARRA funds, 38 of which will be Out-of-School youth.²²

South Coastal plans to focus the training specifically in emerging regional industries, such as healthcare, “green jobs” (especially weatherization, solar and utilities), film and specialized jobs in manufacturing.²³ South Coastal would like to keep most training options in Individual Training Accounts to ensure customers have a full range of options to meet their needs. There will be some training in group training (small-scale): South Coastal is procuring programs through a Request for Proposals process, with the focus being on ESOL related to occupational skills and targeted populations (such a chronically homeless), and especially in fields with a defined need.²⁴ South Coastal will not be offering training funds for On-the-Job Training, Skill Upgrading or Customized Training.²⁵

The total number of new staffing will be ten at the moment. There will be seven new Wagner-Peyser job specialists, two Title I job developers and one training counselor.²⁶

¹ Employment and Wages (ES-202).” The Executive Office of Labor and Workforce Development. Third Quarter data 2006, 2007, 2008 for South Coastal in all types of ownership by Industry Totals by 2-digit NAICS Code.

http://lmi2.detma.org/lmi/lmi_es_a.asp

² Ibid.

³ Ibid.

⁴ Ibid.

⁵ Ibid.

⁶ Ibid.

⁷ “Massachusetts Regional ARRA Allocations.”

http://massworkforce.com/documents/2009_ARRA_Allocations.xls. 15 September 2009.

⁸ Chart 1: FY2010 and FY2011 ARRA Labor Exchange Program Summary. Submitted 5/29/09.

⁹ FY 2009 ARRA Budget Narrative for Attachment E.

¹⁰ Ibid.

¹¹ Chart 2: FY2010 and FY2011 ARRA Title I Program Summary for Adults. Submitted 5/29/09.

¹² FY 2009 ARRA Budget Narrative for Attachment E.

¹³ Ibid.

¹⁴ Chart 3: FY2010 and FY2011 ARRA Title I Program Summary for Dislocated Workers. Submitted 5/29/09.

¹⁵ FY 2009 ARRA Budget Narrative for Attachment E.

¹⁶ Ibid.

¹⁷ Ibid.

¹⁸ Chart 1: FY2010 and FY2011 ARRA Labor Exchange Program Summary. Submitted 5/29/09.

¹⁹ Workforce Issuance No. 09-25 Attachment H. Pages 9-10.

²⁰ Workforce Issuance No. 09-25 Attachment H. Page 10.

²¹ Chart 4. FY2010 WIA Title I ARRA Program Summary for Youth. Submitted 5/29/09.

²² Chart 5. FY2011 WIA Title I ARRA Program Summary for Youth. Submitted 5/29/09.

²³ Workforce Issuance No. 09-25 Attachment H. Page 1.

²⁴ Workforce Issuance No. 09-25 Attachment H. Page 5.

²⁵ Ibid.

²⁶ Workforce Issuance No. 09-25 Attachment H. Page 3.

Appendix A

Third Quarter Data

Average Monthly Employment

	2006	2007	2008
Total, All Industries	208,217	209,077	208,554
Agriculture, Forestry, Fishing & Hunting	264	274	283
Mining	433	277	180
Construction	14,914	14,903	13,849
Manufacturing	11,281	11,364	11,042
Durable Goods Manufacturing	6,495	6,388	6,131
Non-Durable Goods Manufacturing	4,786	4,976	4,911
Utilities	1,170	1,287	1,278
Wholesale Trade	8,870	8,590	7,679
Retail Trade	29,628	29,198	29,008
Transportation and Warehousing	4,365	4,429	4,170
Information	4,762	4,894	4,921
Finance and Insurance	20,227	19,104	19,166
Real Estate and Rental and Leasing	3,715	3,580	3,500
Professional and Technical Services	10,768	9,875	10,029
Management of Companies and Enterprises	5,015	4,679	4,417
Administrative and Waste Services	10,427	11,358	10,768
Educational Services	11,722	12,367	12,703
Health Care and Social Assistance	29,911	30,759	31,304
Arts, Entertainment, and Recreation	5,730	5,411	5,522
Accommodation and Food Services	18,824	19,695	19,721
Other Services, Ex. Public Admin	8,802	9,786	11,775
Public Administration	7,390	7,248	7,238

Data extracted from:

“Employment and Wages (ES-202).” The Executive Office of Labor and Workforce Development. Third Quarter data 2006, 2007, 2008 for South Coastal in all types of ownership by Industry Totals by 2-digit NAICS Code. http://lmi2.detma.org/lmi/lmi_es_a.asp

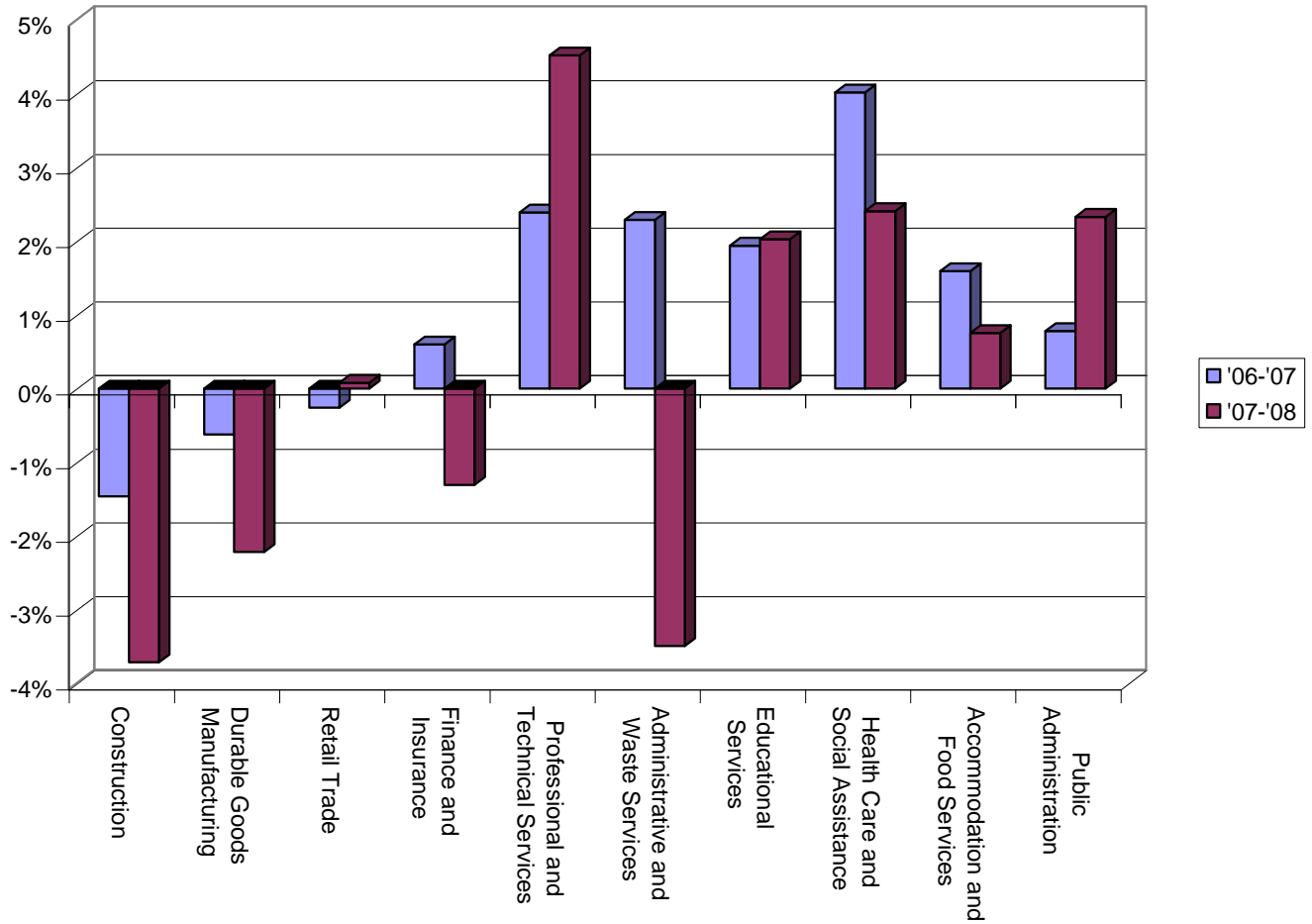
Appendix B

Statewide Third Quarter Data	Average Monthly Employment		
	2006	2007	2008
Total, All Industries	3,200,233	3,240,481	3,251,799
Agriculture, Forestry, Fishing & Hunting	7,749	7,543	7,462
Mining	1,842	1,596	1,339
Construction	161,049	158,696	152,804
Manufacturing	298,840	294,968	286,723
Durable Goods Manufacturing	196,222	195,003	190,681
Non-Durable Goods Manufacturing	102,618	99,964	96,042
Utilities	13,068	13,394	13,741
Wholesale Trade	137,726	139,090	137,014
Retail Trade	349,751	348,845	349,118
Transportation and Warehousing	99,927	100,754	99,560
Information	93,745	94,916	95,374
Finance and Insurance	181,868	182,958	180,567
Real Estate and Rental and Leasing	46,161	45,184	43,897
Professional and Technical Services	246,776	252,674	264,095
Management of Companies and Enterprises	61,790	61,292	61,193
Administrative and Waste Services	176,723	180,768	174,454
Educational Services	264,293	269,417	274,878
Health Care and Social Assistance	471,170	490,101	501,900
Arts, Entertainment, and Recreation	63,976	65,044	65,814
Accommodation and Food Services	264,944	269,162	271,187
Other Services, Ex. Public Admin	124,406	128,601	132,042
Public Administration	134,428	135,479	138,636

Data extracted from:

“Employment and Wages (ES-202).” The Executive Office of Labor and Workforce Development. Third Quarter data 2006, 2007, 2008 for Massachusetts in all types of ownership by Industry Totals by 2-digit NAICS Code. http://lmi2.detma.org/lmi/lmi_es_a.asp

Statewide Change Over '06-'07 and '07-'08 for the Ten Largest Industries, Q3



Data Extracted From:

“Employment and Wages (ES-202).” The Executive Office of Labor and Workforce Development. Third Quarter data 2006, 2007, 2008 for Massachusetts in all types of ownership by Industry Totals by 2-digit NAICS Code. http://lmi2.detma.org/lmi/lmi_es_a.asp